



**ANSON COLONIAL CAFE**



**ABACUS LOUNGE**



**TUNKU ABDUL RAHMAN ROOM (TAR)**



### **RESTAURANT CAPACITY**

The entire restaurant (which includes Abacus, TAR room, outdoor alfresco area and Anson) can accommodate up to 120 guests.

Situated in the beautifully restored Old Malaya building in the heart of Kuala Lumpur, Antara restaurant is an elegant mix of Malaysia's colonial past and modern sensibilities.

Whether you are looking to host your corporate event, wedding or product launch, contact us to turn that idea into a reality.

### **ANSON COLONIAL CAFE**

An informal restaurant located on Antara's ground floor, Anson Colonial Cafe serves interpretations of Colonial Malaysian cuisine, originally started by early Hainanese settlers who cooked for their British colonial masters. The space can host up to 25 people internally and 25 people externally.

### **ABACUS LOUNGE**

Abacus Lounge is a glasshouse on the first floor of Antara Restaurant, offering stunning skylight views of KL Tower. Abacus can be converted into a private dining space for up to 20 pax for a sit down dinner. If you are looking at booking the TAR Room, the space can be used as the welcome area for your guests prior to adjourning to their respective meals.

### **TUNKU ABDUL RAHMAN (TAR) ROOM**

Named after the first Prime Minister of Malaysia, this beautifully restored room with its statement walls featuring 50 pop art prints of its name-sake. The room is ideal for private functions of up to 72 guests with direct access to Abacus, the private bar.

### **PARKING**

After 5PM the large carpark next door to our building can hold up to 200. Parking cost is RM10 per car.

### **VALET PARKING (EVERY DAY after 5pm)**

Valet parking is available throughout the night for a flat rate of RM15 per car.



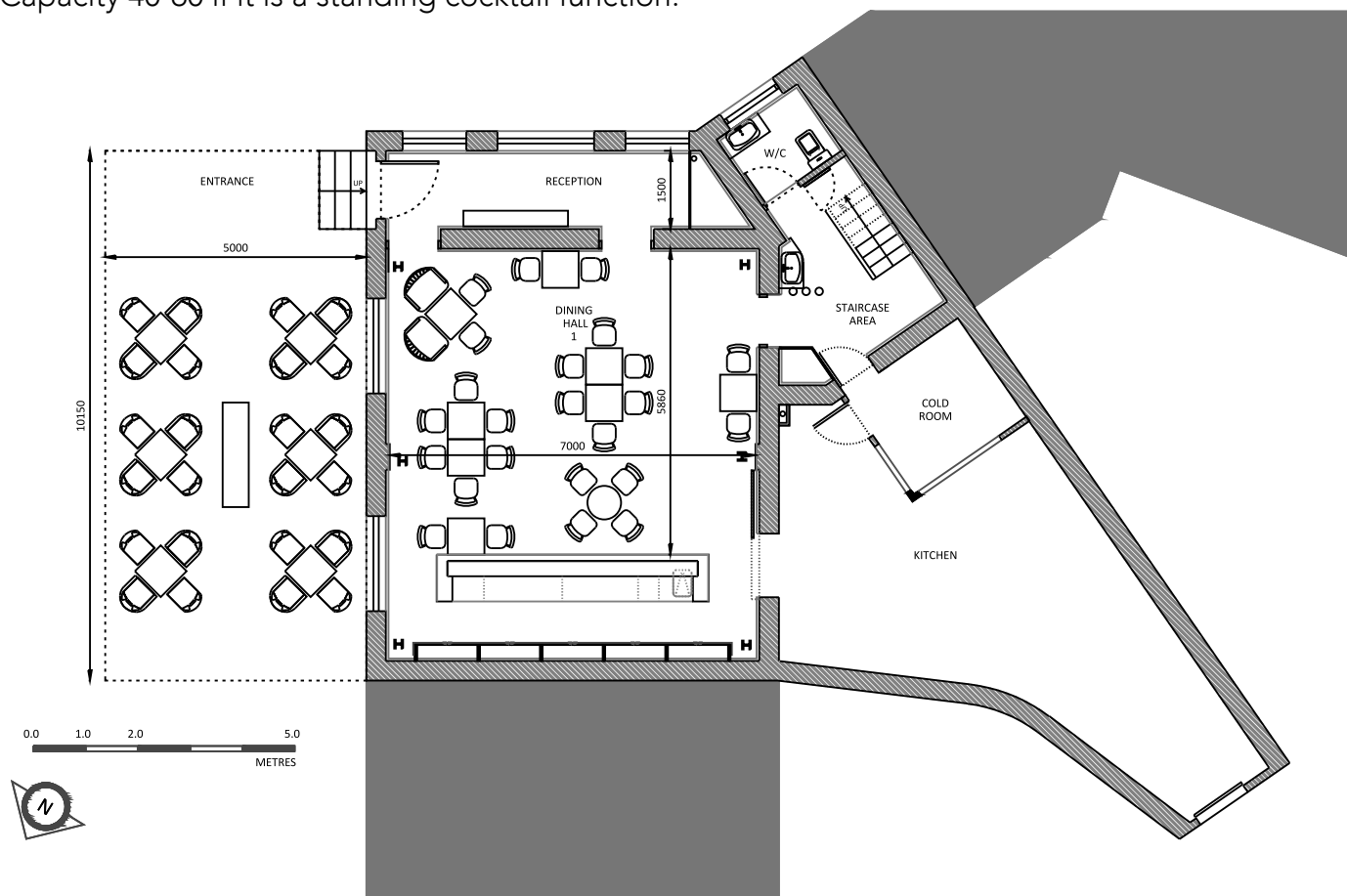
### **TABLESCAPES / EVENT STYLING**

Looking to make your event extra special? Our in-house event stylist can help design your reception area, design personalised menu and provide floral decoration according to your preference.



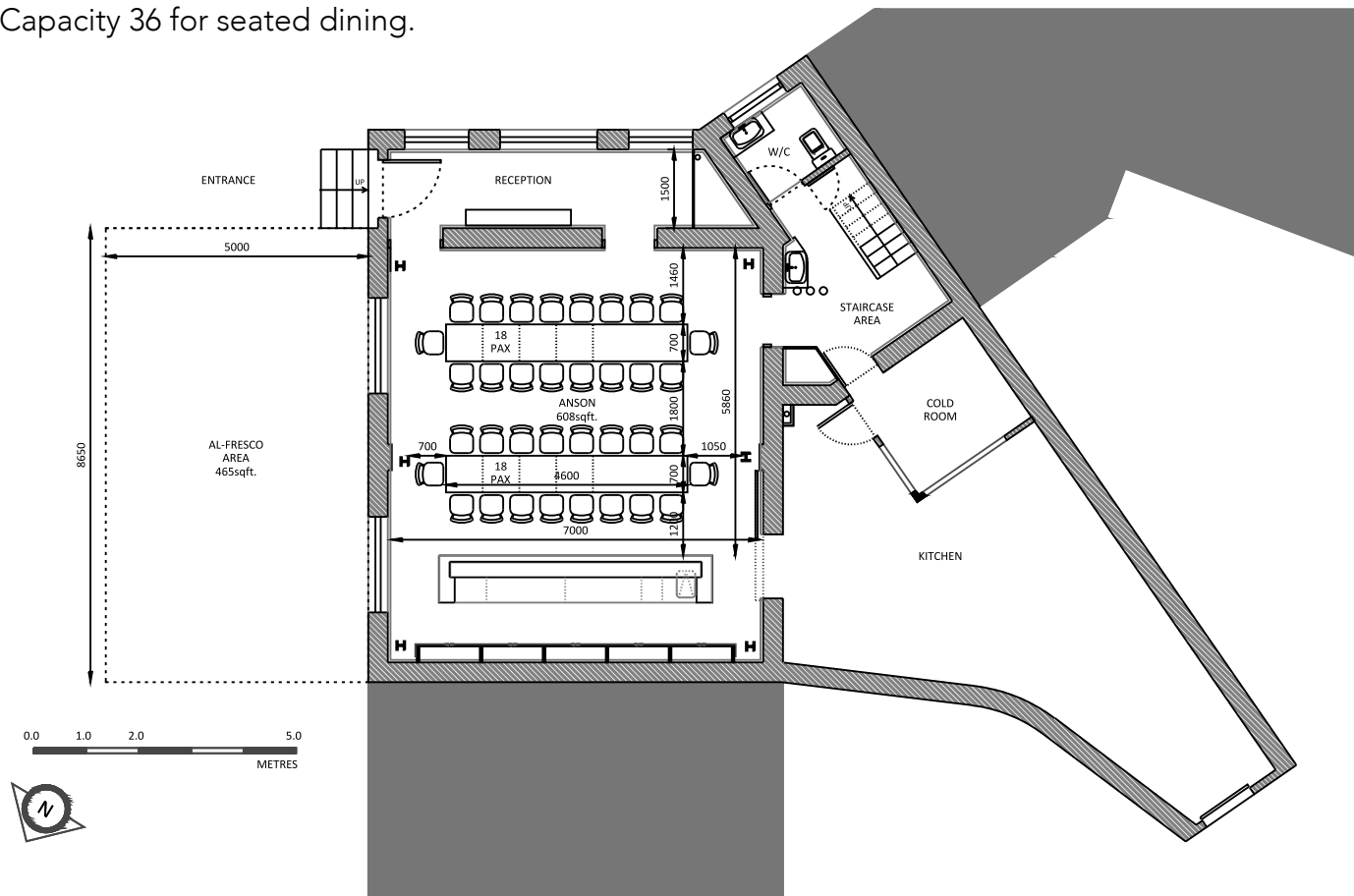
# GROUND FLOOR (ANSON)

Capacity 40-60 if it is a standing cocktail function.



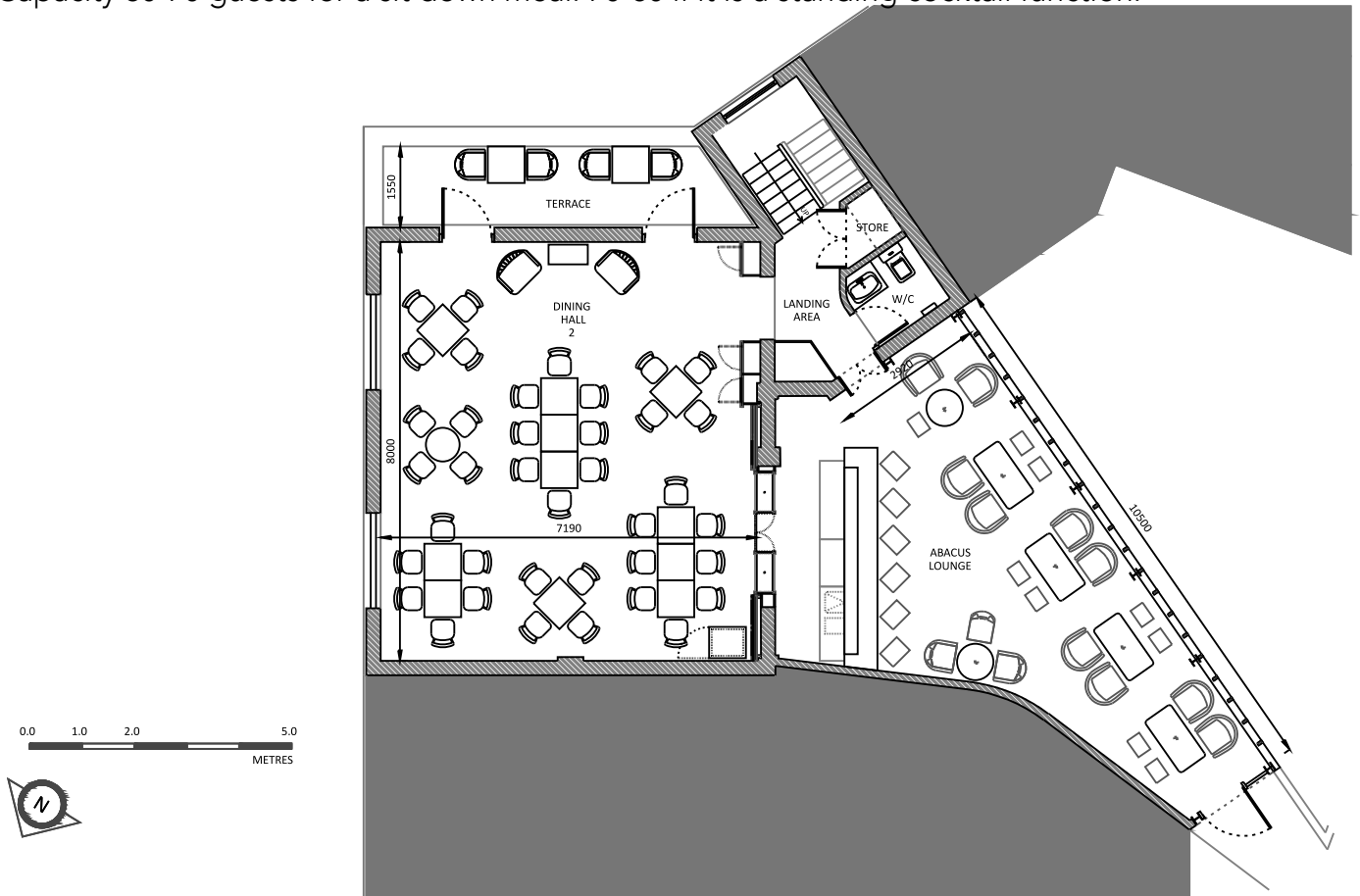
# GROUND FLOOR - BANQUET STYLE

Capacity 36 for seated dining.



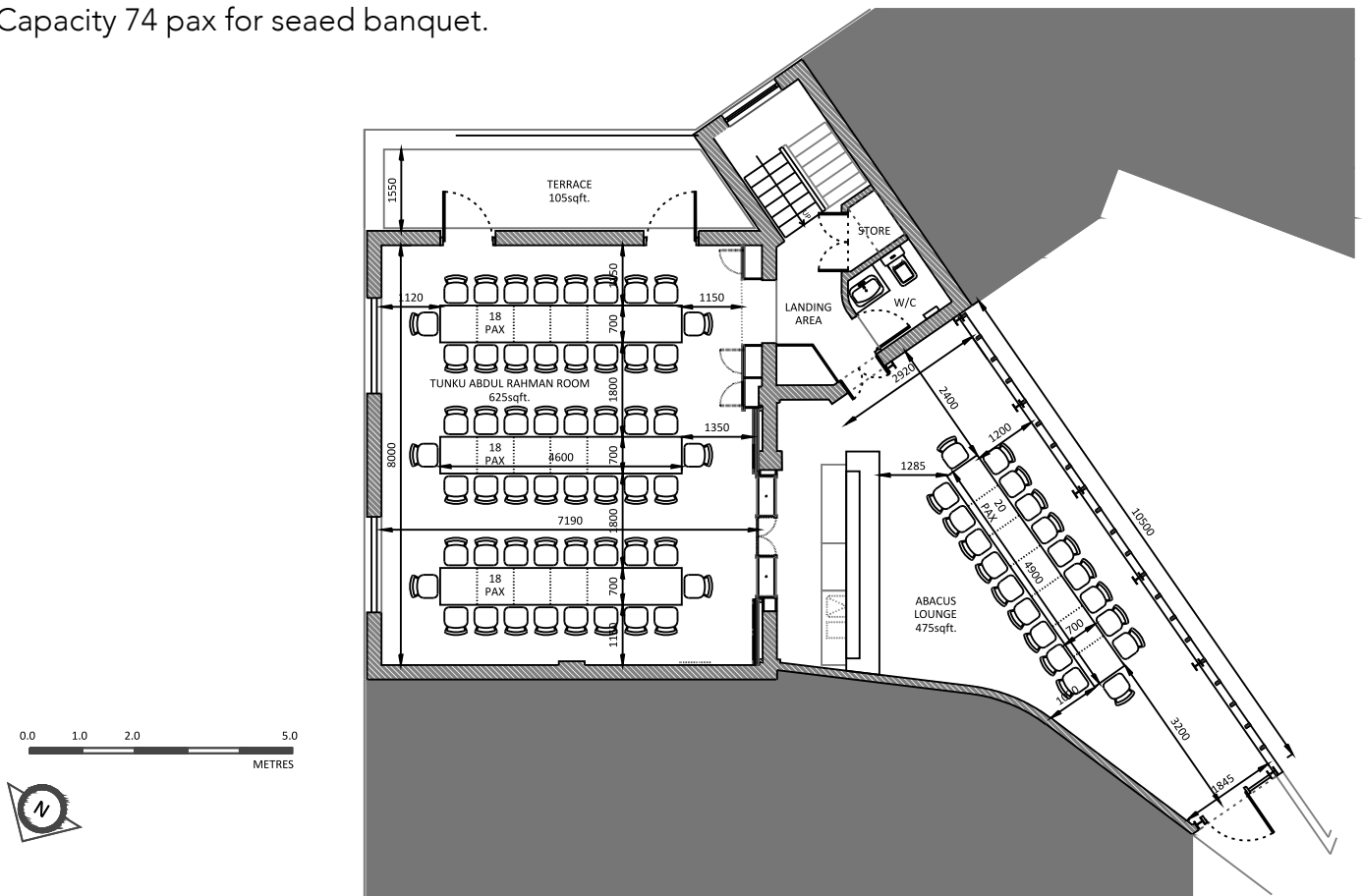
# GROUND FLOOR

Capacity 60-70 guests for a sit down meal. 70-80 if it is a standing cocktail function.



# GROUND FLOOR - BANQUET STYLE

Capacity 74 pax for seated banquet.





Sample RM100 ++ per pax  
**Antara Dinner Degustations**

Pai tee stuffed with anago and shaved foie gras  
~

Dried scallop popiah (rolled at the table)

Belachan and assam chicken wings  
~

Choice of mains

Marron lobster Sarawak laksa  
Or

Marron lobster sang har mee  
Or

Marmite chicken rice  
~

Choice of dessert

Pandan and white chocolate pave with almond sorbet  
Or

Kaffir lemon curd tart

